



# GUICE OFFSHORE

## 150 CLASS DP-1 SUPPLY VESSEL M/V GO FREEDOM

### HULL SPECIFICATIONS

Length:	150'
Beam:	36'
Depth:	12"
Draft Max:	10'
Clear Deck:	90' x 30'

### CAPACITIES

Deck Cargo:	335 LT
Potable Water:	10,000 usg
Fuel:	26,000 usg / 78,000usg*
Ballast Water:	52,000 usg
Liquid Mud:	1,250 bbls
Methanol:	36,000 usg

\* Fuel capacity when utilizing Methanol and Liquid Mud tanks

### PROPULSION

Main Engines:	2 x Cat 3508
Total HP:	1,700 hp @ 1200rpm
Reduction Gears:	Twin Disc
Generators:	2 x 150Kw, 480vt
Bow Thruster:	Diesel Driven, 300 hp Cat

### SPECIAL EQUIPMENT

Fire Monitor:	4" Ekhart
---------------	-----------

### ACCOMMODATIONS

Certified to Carry:	20
Cabins / Berths:	6 / 20
Walk in Cooler:	Yes
Walk in Freezer:	Yes

### ELECTRONICS

Radars:	2 x Furuno
Auto Pilot:	Beier Integrated Systems
GPS (Navigation):	2 x Furuno
Echo Sounder:	Yes
VHF Radios:	3 x VHF
Dynamic Positioning:	Kongsberg
DP Reference System:	DGPS
Electronic Plotter:	Yes
Sat Communication:	Vsat /Direct TV

### DOCUMENTATION

US Flag:	USCG, ON 1167071
Class:	ABS Loadline, USCG Sub "L"
Builder:	Master Boats
Delivery Date:	2005

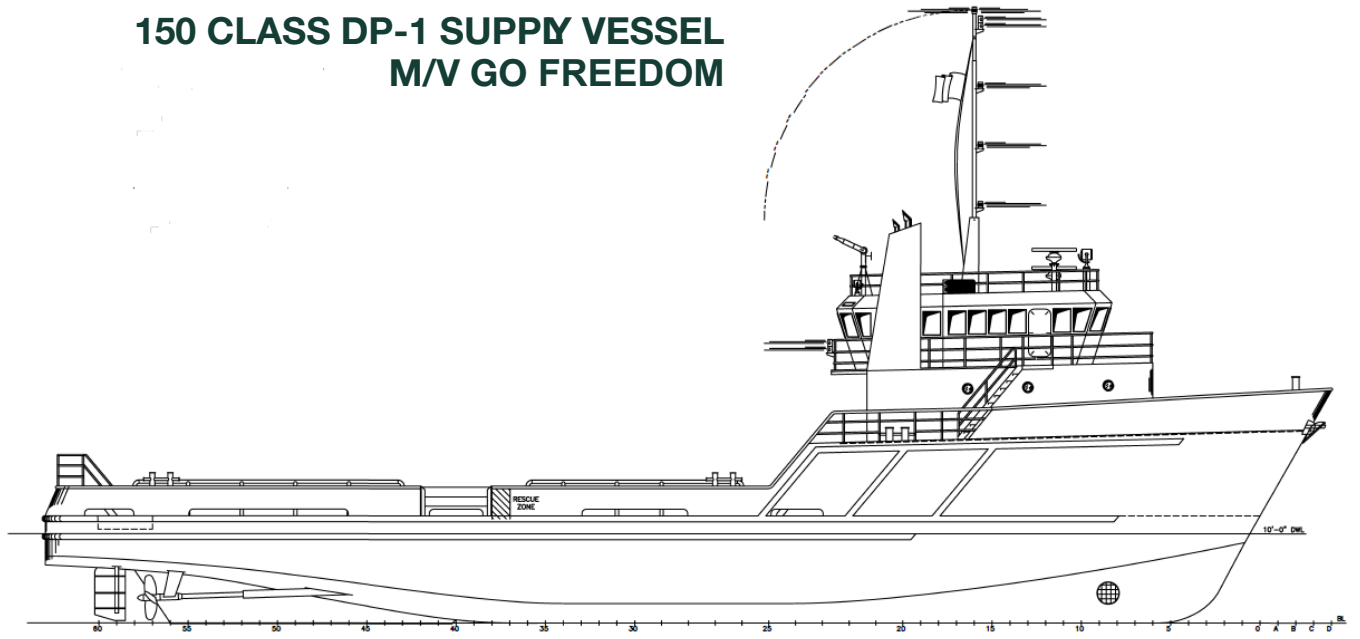


[www.GuiceOffshore.com](http://www.GuiceOffshore.com)

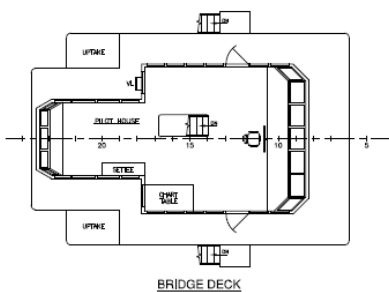
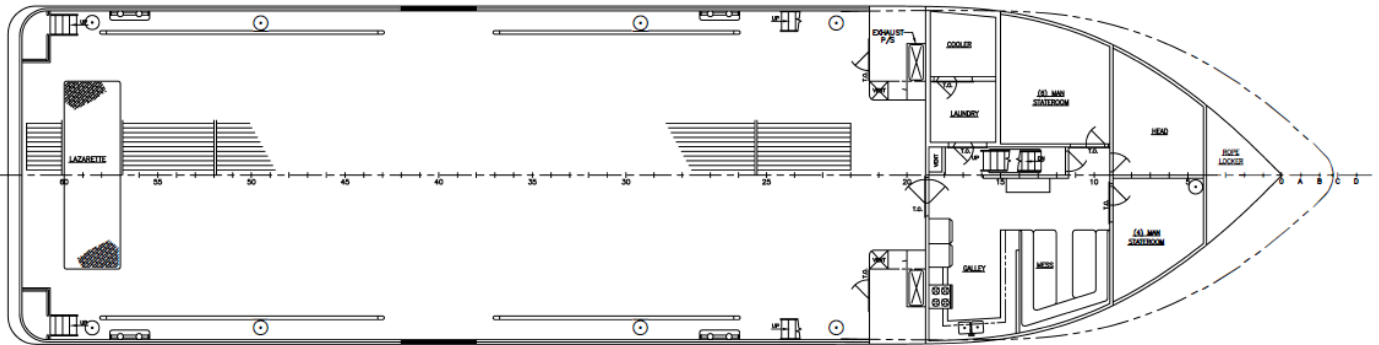
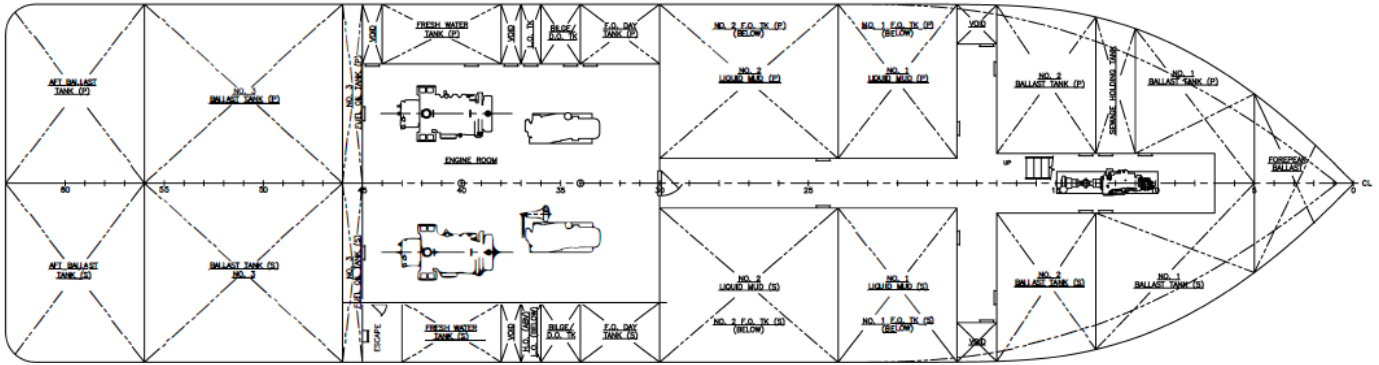
Sales 985-273-2769 / Operations 337-889-0220

# GO GUICE OFFSHORE

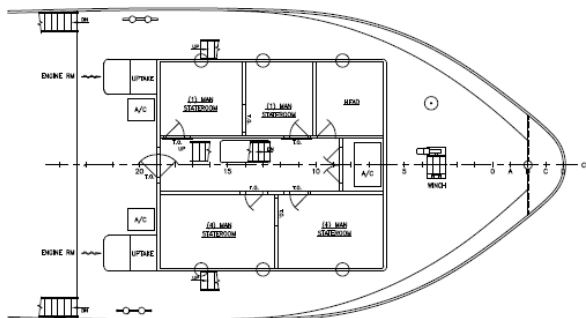
## 150 CLASS DP-1 SUPPLY VESSEL M/V GO FREEDOM



OUTBOARD PROFILE



BRIDGE DECK



FOCSLE DECK